



Cochin Chamber of Commerce And Industry

Export Performance

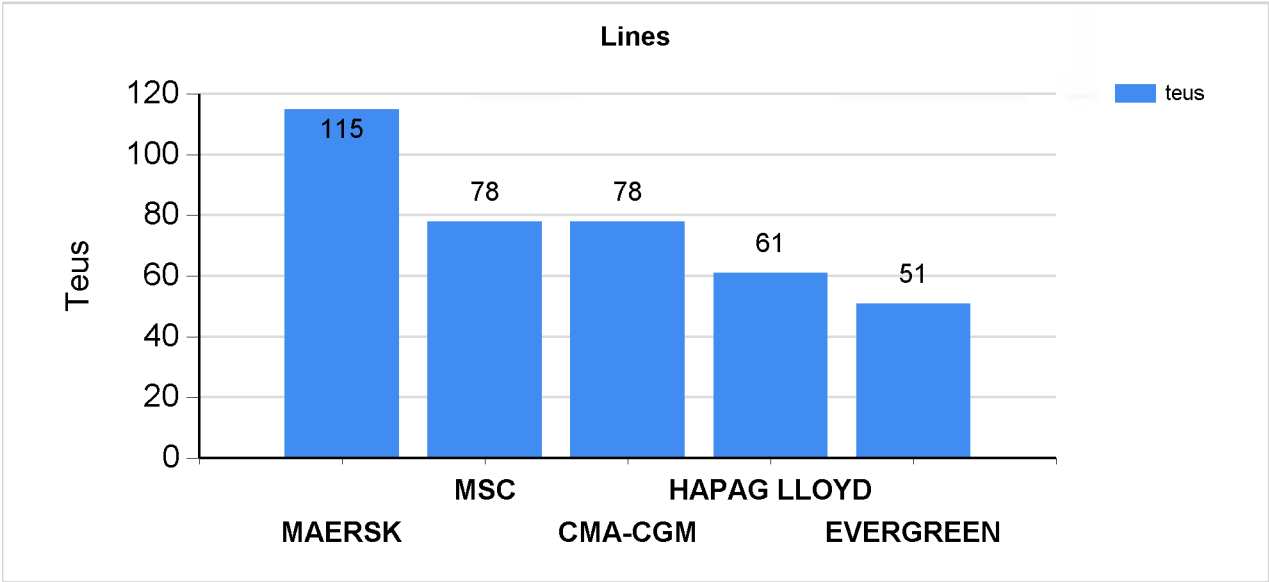
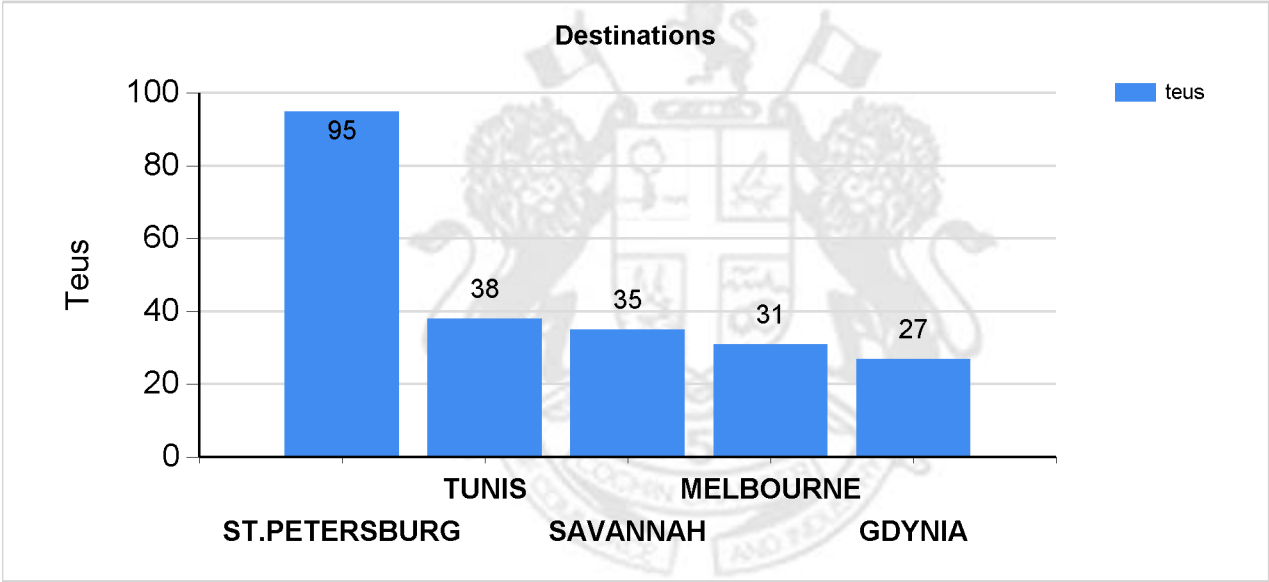
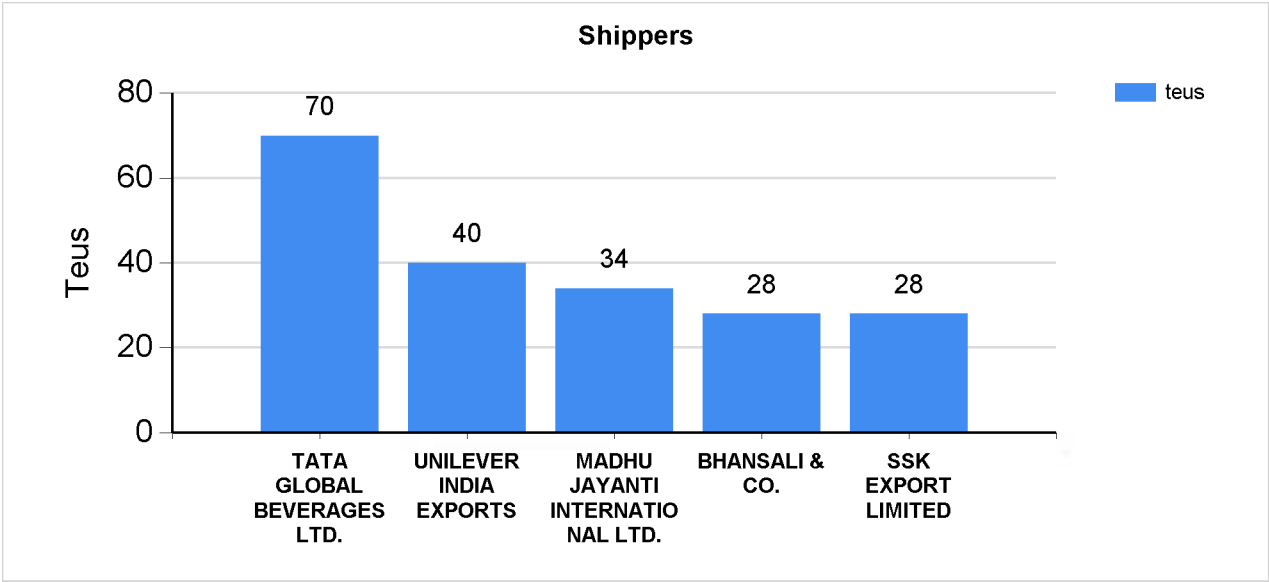
01/04/16 To 30/04/16

TOP 10 PERFORMERS TEA

Shippers			
	Shipper	Quantity	% Share
1	TATA GLOBAL BEVERAGES LTD.	393047	7.61
2	SSK EXPORT LIMITED	336227	6.51
3	UNILEVER INDIA EXPORTS	330695	6.4
4	BHANSALI & CO.	294464	5.7
5	JFK INTERNATIONAL	266748	5.16
6	INDIAN PRODUCTS LTD.	264886	5.13
7	HARRISONS MALAYALAM LTD.	259359	5.02
8	MADHU JAYANTI INTERNATIONAL LTD.	216959	4.2
9	CONSOLIDATED TEA CORPORATION	208000	4.03
10	KANNAN DEVAN HILLS PLANTATIONS	192000	3.72

Destinations			
	Port	Quantity	% Share
1	ST.PETERSBURG	992906	19.22
2	SAVANNAH	386231	7.48
3	TUNIS	377969	7.32
4	KARACHI	285282	5.52
5	JAKARTA	265398	5.14
6	GDYNIA	234565	4.54
7	PORT SAID	203105	3.93
8	HAMBURG	158645	3.07
9	ROTTERDAM	143851	2.78
10	JEBEL ALI	135714	2.63

Lines			
	Lines	Quantity	% Share
1	MAERSK	1000193	19.36
2	MSC	751381	14.54
3	CMA-CGM	692316	13.4
4	HAPAG LLOYD	595829	11.53
5	EVERGREEN	502546	9.73
6	APL	225987	4.37
7	SAFMARINE	182534	3.53
8	RCL	182033	3.52
9	ESL	177909	3.44
10	NYK	155384	3.01



COCHIN CHAMBER OF COMMERCE AND INDUSTRY

CONTAINER MOVEMENT-EXPORT - TEA

01-APRIL-2016 TO 30-APRIL-2016

CIN U91110KL1938NPL001413

Exporter	Port	20'	40'	TEUS	QTY.(KGS)
A. TOSH & SONS (I) LTD.	ALMATY	0	1	2	24000
A.V.THOMAS & CO. LTD.	DAMMAM	1	0	1	11700
A.V.THOMAS & CO. LTD.	JEBEL ALI	1	0	1	6033
ADITYA TRADING CO.	BANDER ABBAS	0	3	6	69804
ADITYA TRADING CO.	DAMIETTA	0	1	2	28000
ADITYA TRADING CO.	PORT SAID	0	2	4	56000
AL-GAYATHRI TRADING CO. P. LTD.	BAHRAIN	1	0	1	3311
AL-GAYATHRI TRADING CO. P. LTD.	DAMMAM	1	7	15	81393
AL-GAYATHRI TRADING CO. P. LTD.	DOHA	1	1	3	22878
AL-GAYATHRI TRADING CO. P. LTD.	JEDDAH	0	3	6	32278
AL-GAYATHRI TRADING CO. P. LTD.	VARNA	0	1	2	9331
AMBOOTIA TEA EXPORTS	JEBEL ALI	0	1	2	22000
ANITA EXPORTS	BANDER ABBAS	0	1	2	16967
ANITA EXPORTS	KARACHI	2	2	6	77122
ANITA EXPORTS	PORT KELANG	1	0	1	10000
AVT NATURAL PRODUCTS LTD.	EASTLEIGH	0	2	4	45150
AVT NATURAL PRODUCTS LTD.	HAMBURG	0	3	6	59844
AVT NATURAL PRODUCTS LTD.	YOKOHAMA	1	0	1	8750
BHANSALI & CO.	BANDER ABBAS	0	1	2	19500
BHANSALI & CO.	ODESSA	0	1	2	21520
BHANSALI & CO.	ST.PETERSBURG	0	12	24	253444
BLUE MOUNTAIN TEA & COMMODITIES P.LTD.	KARACHI	0	6	12	154960
BLUE MOUNTAIN TEA & COMMODITIES P.LTD.	MOMBASA	0	1	2	27573
BOMBAY BURMAH TRADING CORPN.	GDYNIA	1	0	1	13000
BOMBAY BURMAH TRADING CORPN.	ROTTERDAM	1	1	3	33600
BOMBAY BURMAH TRADING CORPN.	ST.PETERSBURG	1	0	1	13140
CHROMETAN EXPORTS P.LTD.	ST.PETERSBURG	0	1	2	14666
CONSOLIDATED TEA CORPORATION	TUNIS	0	8	16	208000
COONOR TEA ESTATES CO. LTD.	ANTWERP	0	1	2	23200
COONOR TEA ESTATES CO. LTD.	ROTTERDAM	0	1	2	24800
COONOR TEA ESTATES CO. LTD.	SHIMIZU	0	1	2	24000
CRAIGMORE PLANTATIONS (INDIA) LTD.	ST.PETERSBURG	1	0	1	11000
CRAIGMORE PLANTATIONS (INDIA) LTD.	TACOMA	0	1	2	21000
EMINENT MINI STORES	RIYADH	0	1	2	15710
ESWARAN BROTHERS INDIA PVT LTD	COLOMBO	2	0	2	24200
GIRNAR FOOD & BEVERAGES P.LTD.	PUSAN	0	1	2	13714
GIRNAR FOOD & BEVERAGES P.LTD.	ST.PETERSBURG	0	5	10	106300
GLENMORGAN TEA ESTATES CO.	JAKARTA	1	0	1	10926
GLENMORGAN TEA ESTATES CO.	NORFOLK	0	3	6	61914
GODFREY PHILLIPS INDIA LTD	KARACHI	0	1	2	26100
HARRISONS MALAYALAM LTD.	AMBARLI	0	1	2	20800
HARRISONS MALAYALAM LTD.	FELIXSTOWE	1	0	1	12000
HARRISONS MALAYALAM LTD.	GDANSK	1	0	1	12130
HARRISONS MALAYALAM LTD.	GDYNIA	0	3	6	62120
HARRISONS MALAYALAM LTD.	HAIFA	1	0	1	10400

HARRISONS MALAYALAM LTD.	HAMBURG	1	0	1	12000
HARRISONS MALAYALAM LTD.	JEBEL ALI	1	0	1	5683
HARRISONS MALAYALAM LTD.	PORT KELANG	1	4	9	117370
HARRISONS MALAYALAM LTD.	TAICHUNG	1	0	1	6856
HEDGE MARKETING COMPANY	COLOMBO	1	0	1	4790
INDIAN PRODUCTS LTD.	COLOMBO	0	0	0	1680
INDIAN PRODUCTS LTD.	NEW YORK	0	1	2	24000
INDIAN PRODUCTS LTD.	SAVANNAH	0	8	16	191206
INDIAN PRODUCTS LTD.	SOUTHSHIELD	0	2	4	48000
J.V.GOKAL & COMPANY	ST.PETERSBURG	1	4	9	98959
JAYSHREE TEA & INDUSTRIES LTD.	KOTKA	1	0	1	12000
JFK INTERNATIONAL	GDYNIA	0	2	4	45356
JFK INTERNATIONAL	SHUWAIKH	0	2	4	43900
JFK INTERNATIONAL	ST.PETERSBURG	0	8	16	164326
JFK INTERNATIONAL	TORONTO	1	0	1	13166
KANNAN DEVAN HILLS PLANTATIONS	GENOA	0	2	4	24000
KANNAN DEVAN HILLS PLANTATIONS	HAMBURG	1	0	1	11000
KANNAN DEVAN HILLS PLANTATIONS	LIVERPOOL	0	2	4	52000
KANNAN DEVAN HILLS PLANTATIONS	MOMBASA	0	1	2	26260
KANNAN DEVAN HILLS PLANTATIONS	PORT SAID	0	1	2	24800
KANNAN DEVAN HILLS PLANTATIONS	ST.PETERSBURG	0	3	6	53940
LIMTEX (INDIA) LTD.	KARACHI	0	1	2	26100
LMJ INTERNATIONAL LTD.	TUNIS	0	5	10	99900
MADHU JAYANTI INTERNATIONAL LTD.	CONAKRY	0	1	2	6891
MADHU JAYANTI INTERNATIONAL LTD.	DAKAR	0	7	14	80137
MADHU JAYANTI INTERNATIONAL LTD.	NEW YORK	0	1	2	23940
MADHU JAYANTI INTERNATIONAL LTD.	SAVANNAH	0	5	10	72553
MADHU JAYANTI INTERNATIONAL LTD.	TEMA	0	3	6	33438
MAJESTIC COMMODITIES P.LTD.	DAMMAM	0	1	2	14500
MATHESON BOSANQUET ENTERPRISES LTD.	JEBEL ALI	0	3	6	44648
MATHESON BOSANQUET ENTERPRISES LTD.	NEW YORK	1	0	1	5120
MATHESON BOSANQUET ENTERPRISES LTD.	ST.PETERSBURG	0	2	4	41500
MY CHOICE COMMODITIES	PORT KELANG	0	0	0	1400
NESTLE INDIA LTD.	BATANGAS	1	0	1	14151
NESTLE INDIA LTD.	KARACHI	0	0	0	1000
NESTLE INDIA LTD.	LAT KARABANG	0	0	0	2210
NESTLE INDIA LTD.	PORT KELANG	0	0	0	1480
NESTLE INDIA LTD.	TOKYO	1	0	1	9408
NESTLE INDIA LTD.	YOKOHAMA	1	0	1	6848
NEW TEA EXPORTS	GDYNIA	0	1	2	20800
NEW TEA EXPORTS	PORT SAID	0	4	8	110605
NEW TEA EXPORTS	ST.PETERSBURG	0	1	2	20735
NISHA ENTERPRISES	LOS ANGELES	0	0	0	21000
PARRY AGRO INDUSTRIES LTD.	JEBEL ALI	0	1	2	25700
PARRY AGRO INDUSTRIES LTD.	OAKLAND	0	1	2	17344
POABS EXPORTS	HAMBURG	1	0	1	8121
SABARI OVERSEAS PVT LTD	JEBEL ALI	1	0	1	10500
SHAH BROTHERS	JAKARTA	0	2	4	52000
SHAH BROTHERS	TAICHUNG	0	1	2	21000
SHAH BROTHERS	TUNIS	0	6	12	70069